

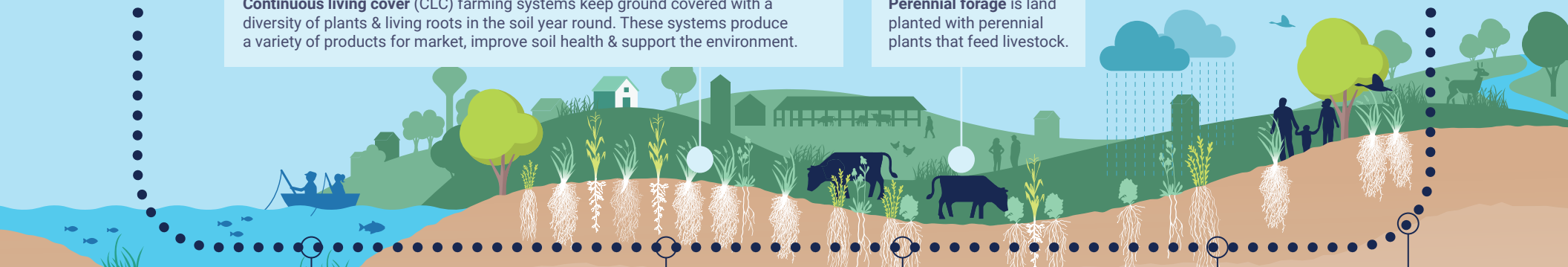
Perennial agriculture and living cover are investments with long-term benefits

Every **\$1.00** invested ————— PROJECTED SROI* —————> **\$3.38** in social & environmental value



Continuous living cover (CLC) farming systems keep ground covered with a diversity of plants & living roots in the soil year round. These systems produce a variety of products for market, improve soil health & support the environment.

Perennial forage is land planted with perennial plants that feed livestock.



Improved Water Quality

- Reduced health risks
- Reduced costs to water management systems
- Improved aquatic ecosystems



On-Farm Economic Benefits

- Income from grazing & other CLC crops
- Reduced inputs, field repair & labor costs after establishment



Soil Health

- Reduced soil erosion
- Reduced infrastructure costs from sediment pollution



Increased Climate Resilience

- Reduced GHG emissions
- Moderated impacts of flooding or drought



Improved Habitat & Ecology

- Improved & increased habitat for wildlife, pollinators
- Increased land & water recreational opps

Who benefits?

Benefits that accrue on-farm have cascading impacts



How to invest

Contact GLBW@umn.edu to discuss a variety of active opportunities with us and network partners.



Support farmer adoption and costs of establishment, transitioning and expansions



Fund supportive resource networks, including technical support and peer-learning



Fund capacity to activate the system levers of markets, value chain coordination, technical assistance and policy

*Social Return on Investment drawn from an impact analysis calculated by Ecotone Analytics: https://z.umn.edu/GLBW_SROI

CLC addresses UN Sustainable Development Goals for reducing hunger, improving health, life on the land & climate.