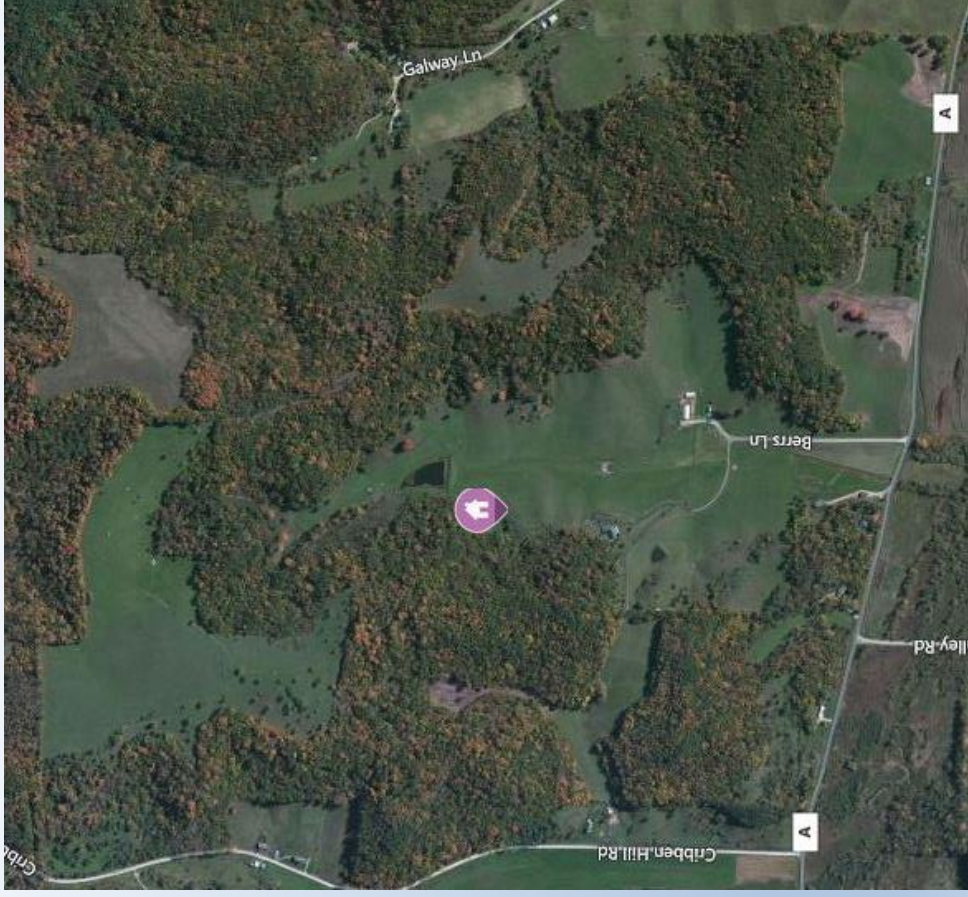
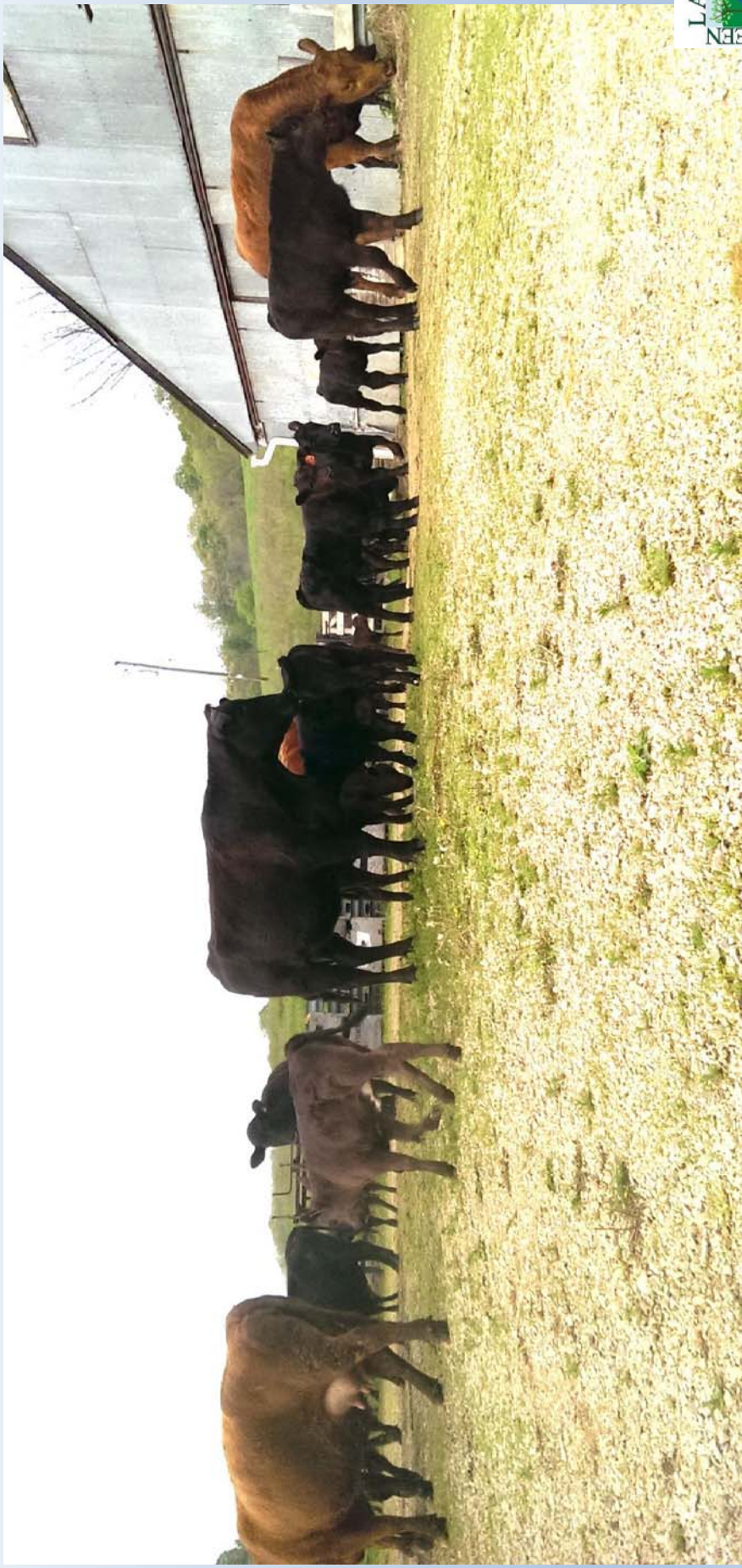


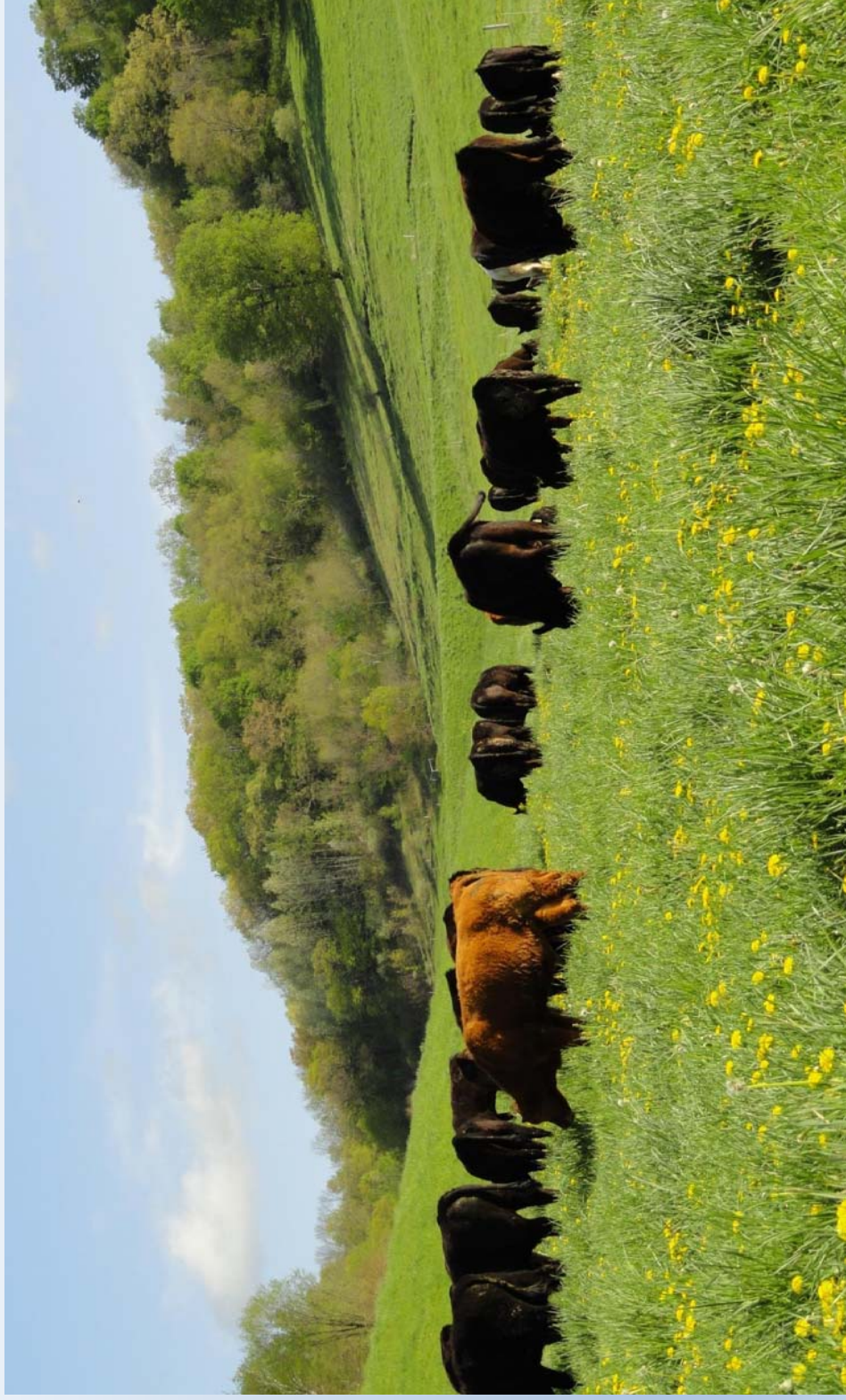
Jerry & Claudia Berres Horse Creek Ranch, Richland Center, WI



Cows and calves get settled in the barnyard upon arrival in May



The herd rotates through 24 paddocks to match the grass growth



Calves weigh in the area of 700 pounds when they leave the farm in October



We like to farm because it keeps us active. Quality of life for the family is important to us.



Farming success is keeping our rural lifestyle and quality of life.



Herd health is extremely important. A mineral feeder fly wipe station is a tool to avoid some problems.



My measure of farm financial success is the ranch supporting the direct expenses.

| Incomes | Amount |
|---------------------------|-------------|
| Pasture Rental | \$10,000.00 |
| Farm Service Agency | \$733.00 |
| Grassland Reserve Program | \$1,563.00 |
| Total | \$12,296.00 |

| Expenses | Amount |
|-----------------------|------------|
| Water System Budget | \$525.00 |
| Fencing Repair Budget | \$400.00 |
| Taxes | \$6,191.31 |
| Insurance | \$2,422.00 |
| Total Direct Expenses | \$9,538.31 |
| Depreciation | 100,000.00 |

Midwest Perennial
Forage Working Group



My quality of life as a farmer is good because I have enough time to enjoy retirement with my family.

